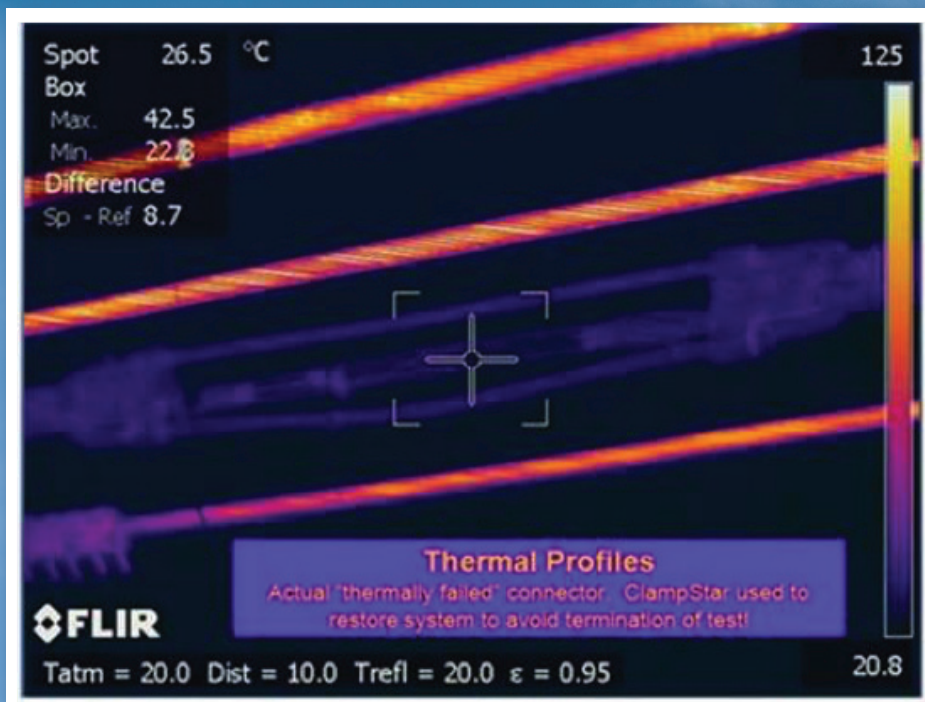


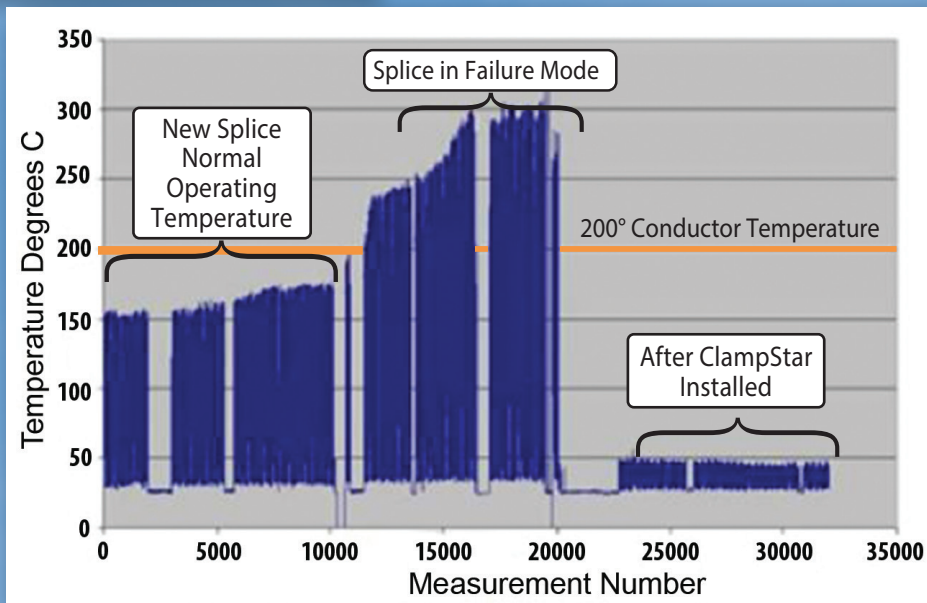
PERMANENTLY Reinforce Connections to “Better-Than-New” condition with **ClampStar**®



As seen in these images, prior to failure, the new splice, installed on new conductor, was running at about 150°C (50°C cooler than the 200°C conductor). In failure mode, the splice exceeded 300°C. Once the ClampStar is installed, the splice cools down, not just back to 150°C, but more than three orders of magnitude lower, to 26.5°C as seen in the IR photo.

Connectors installed on “used – weathered” conductor, WILL NOT have the longevity of a connector installed on “new – un-weathered” conductor – period!

- Available in Full Tension
- Thermal Cycle Tested at 390°C
- Rated for Continuous Service at 250°C
- Corona Free through 800kV AC and 500kV DC
- Installs in less than 10 minutes on energized lines
- Decreases total installation time by 70 - 80%
- Easily Installs over existing connectors
- No mechanical grips, Come-Alongs, jumper cables or cutters needed
- Installs with a hot stick



Graph reflects measurements taken in 2000 cycle test

Save \$, Save Time, Improve Reliability with **ClampStar®**