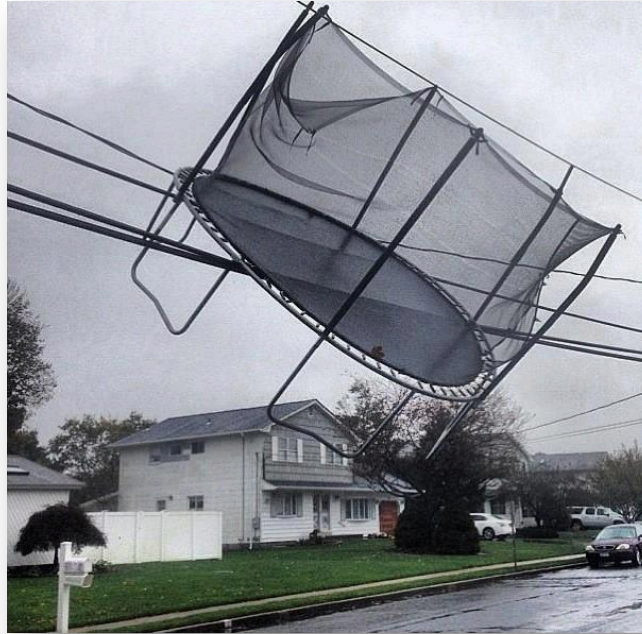


**Emergency repair of overhead conductors can be a real challenge,
especially after a tornado, hurricane, or ice storm.**



Many seasoned linemen; especially those located in areas prone to severe weather have experienced downed power lines resulting in conductors on the ground. It could be the result of a downed tree or some other large object that has caused such serious damage to the line that a portion of it must be cut out and repaired in order to quickly get the power back on.

Usually, in these instances there is tremendous pressure to get the electricity flowing again and temporary repairs are not uncommon. The customers want their utility to do whatever it can as quickly as possible to get the power back on. In wide spread outage situations, crews and tools are often spread thin, as are the proper components to make such a repair. Perhaps the pump and press is with another crew, possibly in another county - or maybe the press is available, but not the correct die set - or perhaps the proper sized connectors are not available. Sometimes, it is a "WIT" situation, where the crew must do "Whatever It Takes" and these types of emergency repairs may require a return trip to make a more permanent repair at a later date.

In emergency situations it may be necessary to cobble something together from available materials that might include components similar to those shown in the image below. (If the emergency repair includes compression connectors, a suitable pump, press and the proper dies are also needed). As shown, bolted quadrant or PG clamps and appropriate connections are one alternative.



Anyway you look at it, sorting through existing stock, maybe even in different warehouses, to gather all these components and the proper tools to install them can be very time consuming. And the resulting installation is not only an eyesore; it's also very heavy and expensive.

These types of repairs, using the scenario and components described above will usually require the skill set of a veteran lineman. However, based on the latest statistics concerning the large number of retiring linemen, they're a lot harder to come by these days or, those limited numbers may be dispersed over a widespread damage area.

The good news is that a much better solution to this problem is now available. It's quick, easy, simple, cost-effective and technically superior to any other system presently available.



ClampStar® Emergency Restoration Kits will be shipped complete from the factory with permanent markings, such that they can be stored in a warehouse and readily identified.

ClampStar® Emergency Restoration Kits are designed to repair overhead conductor damaged or severed during a storm. Available units will accommodate conductors sized from 2/0 – 1272 kcmil, in any reasonable length desired. In addition to torque limiting nuts, each unit is supplied with a Pulling Bail and is prefilled with proprietary CC² inhibitor to prevent galvanic corrosion. The units can be easily installed to join or repair broken or damaged conductor. ClampStar® is the quickest and easiest method for getting the power back on in an emergency situation. No pump and press, no specific die sizes, or specific connector sizes needed - A come-along, one conductor grip, and 3/4" wrench are the only tools required!

Get those lines off the ground, the power restored, and the line crews back to their families with ClampStar Emergency Restoration Kits!

Call 800-269-1462 Today!
Visit www.ClassicConectors.com
info@ClassicConnectors.com

